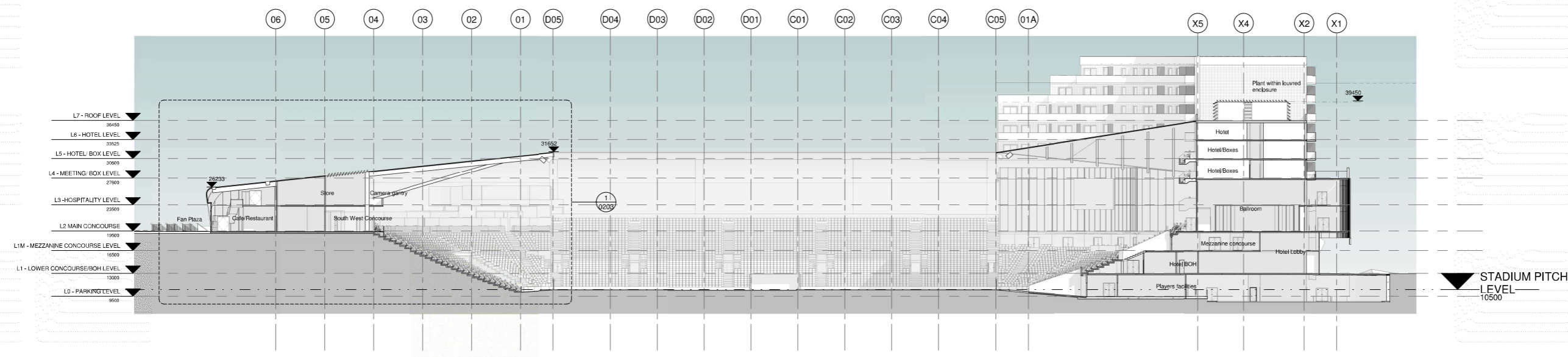
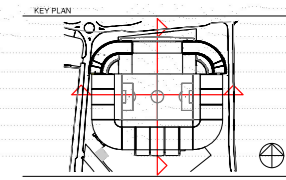
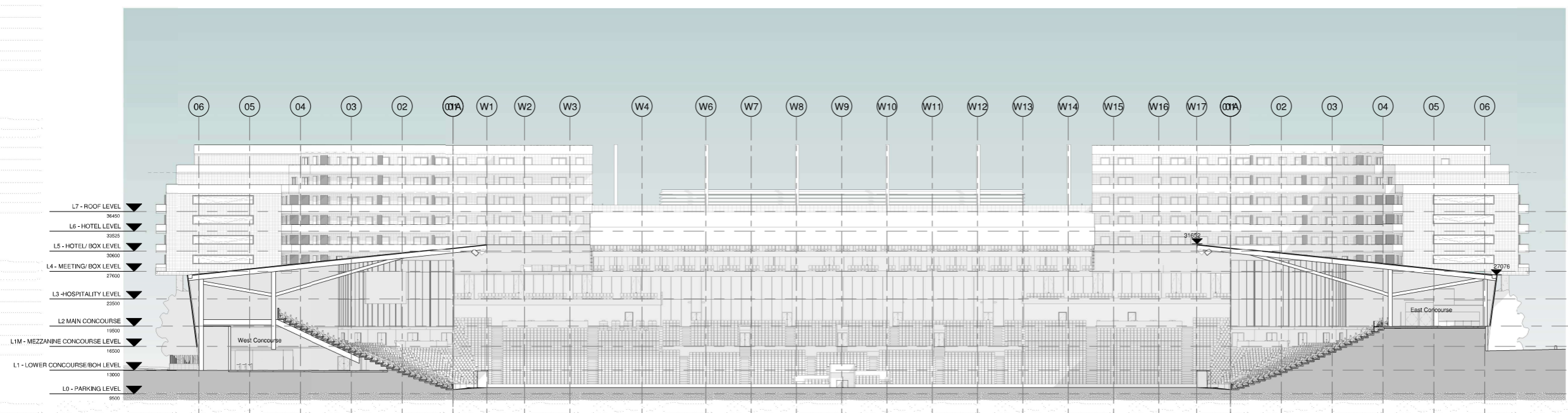


REVISIONS	
REV	DESCRIPTION



1. NORTH SOUTH SECTION - PHASE 02
1 : 250



2. EAST WEST SECTION - PHASE 02
1 : 250



© COPYRIGHT, ALL RIGHTS RESERVED
THIS DRAWING IS THE PROPERTY OF POPULOUS AND SHOULD NOT BE REPRODUCED OR TRANSMITTED IN ANY FORM OR BY ANY MEANS, ELECTRONIC OR MECHANICAL, INCLUDING PHOTOCOPYING, RECORDING, OR BY ANY INFORMATION STORAGE AND RETRIEVAL SYSTEM, WITHOUT THE WRITTEN PERMISSION OF POPULOUS AND ITS CLIENTS.
USE THIS DRAWING ONLY IN CONNECTION WITH THE PROJECT TO WHICH IT IS REFERENCED. CHECK ALL DIMENSIONS ON SITE BEFORE PROCEEDING WITH CONSTRUCTION.

ARCHITECT
POPULOUS
14 BLADES COURT | DEodar ROAD | LONDON | SW15 2NU | UNITED KINGDOM
TELEPHONE: +44 (0)20 8874 7666 | FACSIMILE: +44 (0)20 8874 7470
E-MAIL: INFO@POPULOUS.COM | WWW.POPULOUS.COM

CLIENT
SOUTHEND UNITED FC

PROJECT NAME
SOUTHEND UNITED FC

DRAWING TITLE
NORTH/SOUTH, EAST/WEST SECTIONS
PHASE 02

STATUS	PROJECT NO.						
FOR PLANNING	3093						
DATE	SCALE						
24.03.2017	1 : 250						
DRAWN	CHECKED	APPROVED					
JB	CC	MT					
PROJECT	ORIGIN	ZONE	LEVEL	TYPE	ROLE	DRAWING	REV
SUS-POP-ZX	ZX	ZZ	SE	A		0201	00